

Uplight/Downlight Remote Control Installation Instructions

KVVRM-807-A-W

This remote control is designed to separately control your ceiling fan speed, direction, Uplight and Downlight.

1. Preparing transmitters and receiver for installation

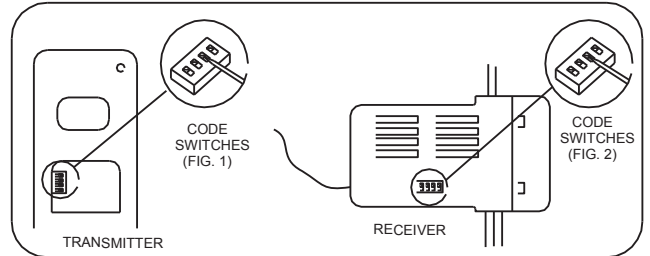
This unit has 16 different code combinations to prevent interference from other remote devices (ie. garage door remotes). Reset code if interference occurs.

A. Setting the code.

- Remove battery covers. (Front plate on wall transmitter. Back plate on hand held transmitter)
- Use a small screw driver or ball point pen to slide code switches up or down to your choice. (Using factory default settings is not recommended)
- Set the code on both transmitters and the receiver to the same code.
- Replace covers on the transmitters

B. Install Batteries in transmitters

- Install the provided battery into the wall transmitter
- Align "+" and "-" signs as indicated, replace front plate with your color choice
- Install 9 Volt battery into hand held transmitter (not included)
- Replace battery cover.



2. INSTALLING RECEIVER IN CEILING FAN

A. Safety precautions:

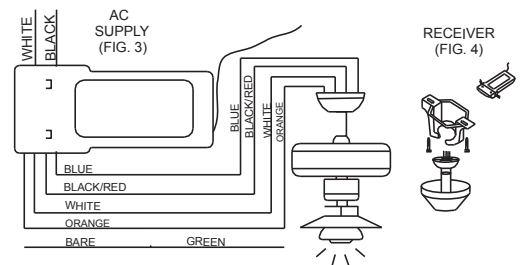
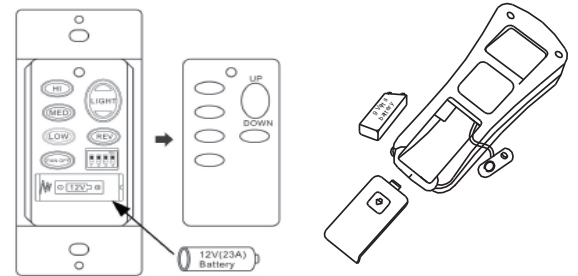
WARNING: Risk of Injury or Electrocution!

Disconnect electrical power by removing fuse or switching off circuit breaker. Electrical wiring must meet all local and national electrical code requirements. It is recommended that this control be installed by a qualified, licensed electrician.

B. Installing receiver in fan (FIG. 4)

- Disconnect electrical power from the circuit
- Remove ceiling fan canopy cover.
- Make wiring connections as follows, using the wire nuts supplied:
 - Connect BLACK control unit wire (AC IN L) to BLACK supply wire
 - Connect WHITE control unit wire (AC IN N) to WHITE supply wire
 - Connect BLACK control unit wire (TO MOTOR L) to BLACK fan wire
 - Connect WHITE control unit wire (TO MOTOR N) to WHITE fan wire
 - Connect BLUE control unit wire (FOR LIGHT DOWN) to blue fan light wire
 - Connect ORANGE control unit wire (FOR LIGHT UP) to Orange fan light wire

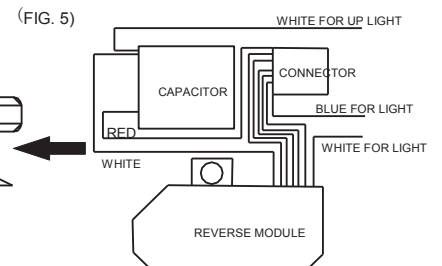
(If fan or supply wires are different colors: have unit installed by a qualified, licensed electrician)
- Push all connected wires up into junction box.
- Lay the black antenna wire on top of the receiver, and put the receiver in the mounting bracket.
- Reinstall the canopy on the mounting bracket.



CAUTION: Do not use receiver in canopies where the mounting is not as shown in FIG. 4 above. Ceiling slope should not exceed 30 degrees.

C. Install switch receiver in the Switch Housing/Bottom Cup (FIG. 5)

- Remove the Switch Housing/Bottom cap from the fan
- If manual switches are present, cut wires from switches and remove existing internal components
- Install new remote components inside the Switch Housing/Bottom cap
- Connect the matching plug and connect White wire (FOR LIGHT UP) to BLUE wire from fan.
- Reinstall the Switch Housing onto the fan.



3. OPERATING TRANSMITTER:

A. Store the transmitter away from excess heat or humidity.

B. Fan operation buttons on the panel of the transmitter.

- On/Speed buttons: "HI", "MED" and "LOW" turn fan on and/or set speed.
- OFF button turns off fan.
- REV key reverses direction of fan.
- LIGHT key turns on/off Up or Down light when pressed on top or bottom of key (Top of LIGHT key controls Up Light, bottom controls Down Light)
- To dim lights: press and hold top or bottom of LIGHT key until desired brightness is set.
- The light dimmer settings will be remembered by the remote when light is switched off.

4. TROUBLE SHOOTING GUIDE

A. Fan/Lights fail to operate

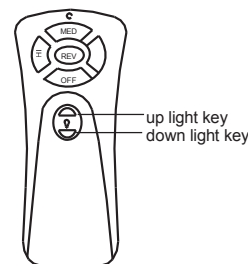
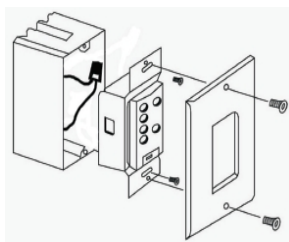
- Check batteries in transmitters (Red LED should light when buttons are pressed).
- Power to fan/receiver? Check circuit breaker/fuse.
- Receiver wired correctly? Check instructions and diagrams
- Receiver and transmitters set to same code?

A. Remote fails when far from Fan

- Reposition antenna wire

B. Light fails to operate

- Light kit switch on?
- Bulbs burned out/broken?
- Light kit properly wired?



NOTICE!

Your ceiling fan and light kit assembly must meet the following requirements:

- Electrical rating: 120V 60Hz 3.5A
- MAX. motor amps: 1.0
- MAX. light watts: 300-(Incandescent only)

CAUTION:

Ceiling Angle Should Not Exceed 30 Degrees.